

The First Three Years Last Forever

Safety, consistency and nurturing in the first three years can result in a lifetime of fulfillment.

Neglect and abuse during these first early years can result in a lifetime of lost potential.

Did you know?

- *The way you speak, handle and respond to a baby shapes the baby's brain?*
- *Prolonged early stress disrupts brain architecture and increases the risk of emotional and behavioural disorders?*
- *Nurturing and responsiveness in the early years builds a strong foundation for learning, behaviour and relationships?*

"We are the first generation to have this knowledge at our finger tips. We ignore it at our peril!"

Dr Simon Rowley, Paediatrician

This information is relevant to each and every one of us

HOST: Johnsonville Full Day Kindergarten

VENUE: 6 Wanaka Street,
Johnsonville
(opposite the Railway Station)

DATE: Tuesday 13th September 2011

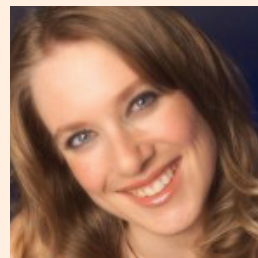
TIME: 6-7:30pm

Please RSVP to Christine or Vicki

Phone: 478 8722

Email: johnsonville@wn-kindergarten.org.nz

Door Charge: Gold Coin Donation



Sarah Best - Brainwave Presenter

Sarah has three young daughters, all of whom have been instrumental in uncovering a hidden passion for advocating for children and educating parents about the hugely important role they are undertaking.

Also a facilitator for workshops on Child Development and the Playcentre SPACE programme for new parents and their

babies, Sarah is a passionate believer in conscious and respectful parenting and allowing our tamariki/children the gift of free natural movement.

Initially based on instinct, the emerging neuroscience is now proving these approaches to be highly beneficial for the development of the next generation and it is incredibly exciting for Sarah to be involved in disseminating this critical information to parents and caregivers through the Brainwave presentations.